



# Annual Impact Report **2022**

[www.ina.org.au](http://www.ina.org.au)



Photo this page: A supported family in Ethiopia.

**87%** of funds to overseas projects

**117,743** total beneficiaries were impacted

**33,660** children were championed

**73,129** women were strengthened

**35,000** mothers benefited from maternal and child health related services



Australian Government  
Department of Foreign Affairs and Trade



ACFID  
MEMBER



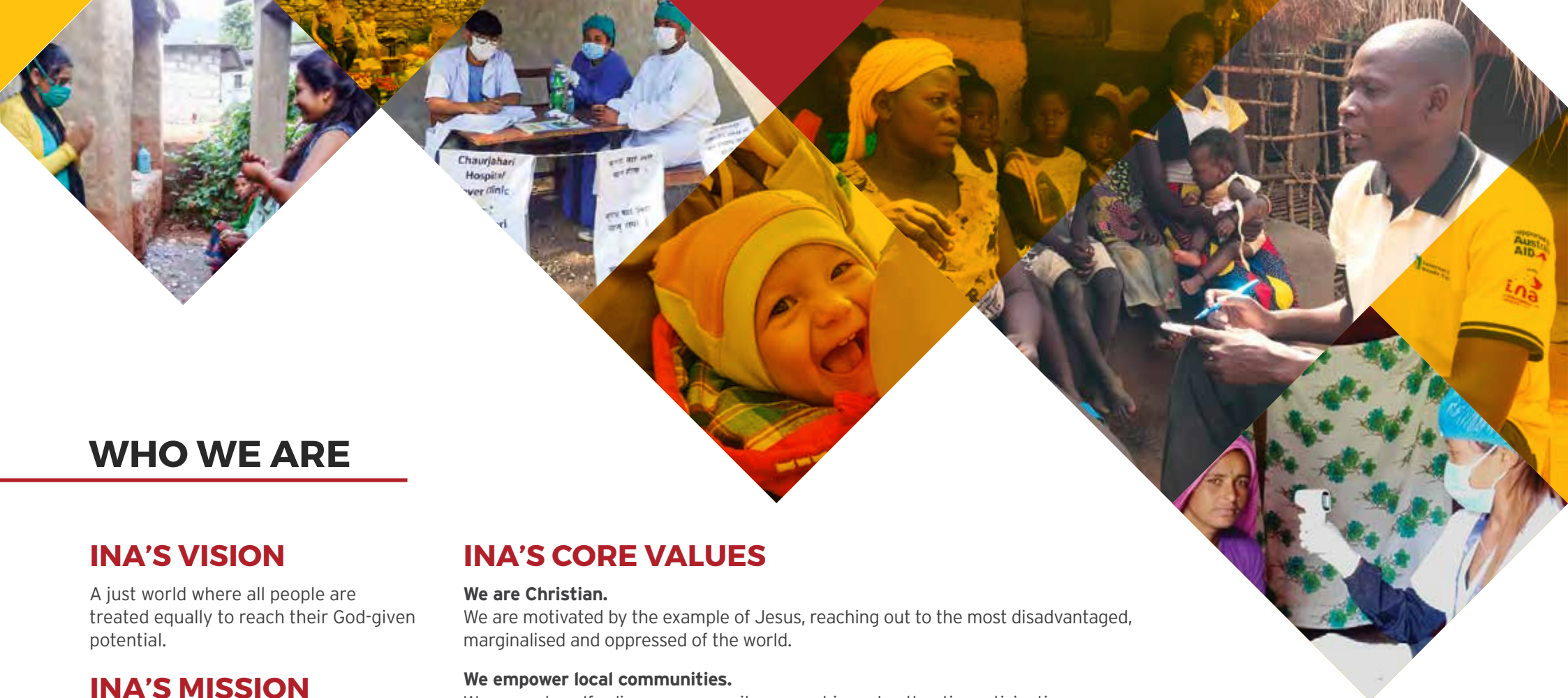
# TABLE OF CONTENTS

---

- 4 Who We Are**  
INA's vision, mission, core values, strategic goals and what sets us apart.
- 6 From the Chief Executive Officer**  
David Ensor shares his thoughts from this past year.
- 7 From the Board Chair**  
Board Chair, Ian Curtis AM, summarises the year's events at INA.
- 8 Where We Work**  
Where INA operates for women and children across Asia and Africa through Health, Education, Livelihoods and Humanitarian programs.
- 11 Crisis and Emergency Responses**  
How INA and local country partners supported vulnerable people during times of crisis.
- 18 Project Evaluation**  
An evaluation of INA's Agri-Business for Community Development (ABCD) project in Uganda.
- 20 Partnerships For Good**  
Acknowledging the charitable groups and organisations that support INA projects.
- 22 Donor Engagement**  
A summary of how engagement underpins INA's vision.
- 26 Education & Advocacy Programs**  
Teaching Aussie school kids is a part of what INA does to bring about meaningful change and global understanding.
- 29 Governance**  
About the governing Board and Committees that support INA's strategies.
- 31 Financial Reports**  
Revenue reports, income statements, financial positions and equity profile for 2021/22.
- 35 Let's Chat**  
View INA's accreditations, contact details and acknowledgements.

## Acknowledgement of Country

INA respectfully acknowledges the Wurundjeri people of the Kulin Nation, the traditional custodians of the land on which INA's office is located.



## WHO WE ARE

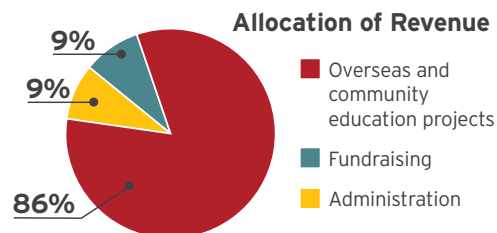
### INA'S VISION

A just world where all people are treated equally to reach their God-given potential.

### INA'S MISSION

We are committed to building innovative partnerships for community wellbeing and empowering women and children.

### HOW FUNDS ARE SPENT



### INA'S CORE VALUES

#### **We are Christian.**

We are motivated by the example of Jesus, reaching out to the most disadvantaged, marginalised and oppressed of the world.

#### **We empower local communities.**

We promote self-reliance, community ownership and authentic participation.

#### **We are a voice for the poor, the disadvantaged, and the oppressed.**

We advocate for just actions that bring positive change to the lives of the disadvantaged, marginalised and oppressed of the world.

#### **We value and respect people of all ages, genders, races and creeds.**

We embrace all people and treat everyone equally and with dignity.

#### **We demonstrate integrity and commitment.**

We are ethical and passionate about meaningful and quality partnerships in Australia and overseas.

#### **We are stewards of natural, human, and financial resources.**

We are transparent and accountable, striving to maximise our impact and effectiveness.

## GOALS & DIFFERENCE



### STRATEGIC GOAL 1

**Health:** Improve health and nutrition of women and children



### STRATEGIC GOAL 2

**Education:** Improve quality and accessibility of education



### STRATEGIC GOAL 3

**Livelihoods:** Improve family resilience to be food secure and economically empowered



### STRATEGIC GOAL 4

Improve support, awareness and action in support of development goals

## WHAT SETS INA APART?

International Needs Australia (INA) is a donor-funded international development and DFAT accredited organisation, working with the poorest and most marginalised communities – especially women and children – to eliminate poverty and its causes, regardless of affiliation. INA is different in its approach to international development and engagement with Australian supporters because INA:

- Directs over **87% of funds to overseas and community education** programs,
- Focuses on three key areas: **Education, Health and Livelihoods**,
- Works in **Southeast Asia, South Asia & Eastern Africa** (Ethiopia, Uganda, Ghana, India, Nepal, Sri Lanka, Myanmar, the Philippines),
- Commits to in-country project **localisation** with innovative partners and work through local staff and volunteers. We believe this is respectful and supports the development of more substantial and sustainable partner organisations and community outcomes,
- Believes in poverty alleviation through a **cross-sectoral and holistic approach** to community development. This approach allows us to partner with donors and other agencies committed to holistic poverty alleviation, focusing on community-prioritised needs,
- Conducts **national education programs with Australian students** that align with the Australian curriculum and increase social justice, compassion, understanding of global poverty and support the Sustainable Development Goals,
- Is grounded in **Christian values** and strives for a just world where all people are treated equally to reach their God-given potential,
- **Brings our funding contributors and in-country partners closer together** and easily co-design projects with all stakeholders to support innovation and alignment of programs,
- **INA is part of the International Needs global partnership** of 10 developed countries and 22 developing country partners across the globe. This supports advancing best-practice development approaches and donor engagement for large-scale higher impact programs.

# FROM THE CEO



Dear Friends,

Thank you for being part of a global partnership that helps some of the most oppressed, poor, and marginalised people to be what they CAN be. Through authentic local partnerships, we target all the issues that impact a person's life through sustainable programs for poverty reduction and community wellbeing.

It is only through your support and partnership that we can together achieve these life-transforming outcomes in Southern and Southeast Asia and Eastern Africa. We strive for a just world that treats all people equally to reach their God-given potential.

Together, through our focus on women and children, we work to help individuals, families, and communities get back on their feet in countries where COVID-19 has led to high mortality, unemployment, and delayed learning. Families are divided as parents move to other countries to try and earn an income. Your humanitarian, ChildLink and SHE contributions have made a world of difference.

Together, we have tackled one of the worst famines in the Horn of Africa, and your support has helped keep children in school and fed. We have supported the needy as they struggle to survive the economic crisis in Sri Lanka. You have opened your hearts to refugees from the war in Ukraine.

An individual needs TOTAL net assets of only AUD12,991 to be among the wealthiest 50% of world citizens in 2021, and AUD138,346 to be in the top 10% of global wealth. This puts poverty in perspective. Over 2.8 billion individuals - 53% of all adults in the world - had a TOTAL net wealth below AUD15,540 in 2021.<sup>1</sup>

We focus on women and child-focused development programs as they give the most significant return now and in future generations in the communities.<sup>2</sup> Approximately 40% of children aged between 3 and 4 years in low-and middle-income countries have stunted development and growth.<sup>3</sup> Empowering women improves childhood cognitive development, growth, early learning, and nutrition outcomes.

INA supports programs in Education, Health and Livelihoods to eliminate poverty and its causes, regardless of affiliation. In addition, we know that Australian youth care about their world. We run educational programs with Australian students to help students understand their passion for social justice, deepen their compassion for global poverty, and understand the Sustainable Development Goals.

INA has a commitment to project localisation through local staff and volunteers in local in-country organisations.

Thank you to the Department of Foreign Affairs and Trade (DFAT) for ongoing support. INA has achieved successful full re-accreditation for a further five years.

Some highlights from this financial year include:

- **35,000 mothers and 8,235 children** in Nepal and Ethiopia benefitted from maternal and child health-related activities,
- **34,385 children including 455 children with disabilities** were supported through INA's Education, hygiene, child sponsorship or sustainable livelihood programs,
- **117,743 total beneficiaries** were impacted.

**David Ensor**  
Chief Executive Officer

<sup>1</sup> <https://www.credit-suisse.com/about-us/en/reports-research/global-wealth-report.html>

<sup>2</sup> <https://unesdoc.unesco.org/ark:/48223/pf0000190214>

<https://www.un.org/en/chronicle/article/improving-maternal-health-through-education-safe-motherhood-necessity>

<sup>3</sup> <https://www.ncbi.nlm.nih.gov/pmc/articles/PMC8483356>

## FROM THE BOARD CHAIR



Dear Friends,

This year has bridged the period of COVID lockdowns and difficulties, and the growing period of opening up our lives again to a semblance of normality. However, it has impacted our activities and provided a difficult first year for David as our CEO. We are grateful to David and the staff for continuing to find ways to operate to the fullest extent possible despite it all.

This year also saw us grasp an opportunity to move our offices to more

suitable accommodation in Bayswater when we were approached by a developer asking if we would terminate our lease so he could purchase the Vermont property from our landlord. As a result, we now have much superior working arrangements, all at no cost, and with a cheaper ongoing rental.

We are pleased that, with your faithful giving, the marketing efforts of the staff, the funding from the developer, and the assistance from the government during COVID, we were able to complete the year with a small deficit of \$6,732.

We are grateful for your continued faithfulness in responding to the needs of those not quite so fortunate as ourselves.

We are also grateful to the Australian Government for their regular funding of our projects through the Australian NGO Co-operation Program (ANCP) which enables us to match your giving and impact so many more people as a result. Thank you.

At our last Annual General Meeting in November 2021, we elected Kylie Wingjan to the Board for a three-year term. Kylie was previously our

International Programs Manager who has worked for another Christian aid agency for several years. We are glad to welcome her back with her depth of experience and intimate knowledge of INA and our programs. Kylie accepted the responsibility of chairing our Development Committee. At our August 2022 meeting we also elected David Purnell to a casual vacancy on the Board. David has a long experience of more than 30 years at an executive level with World Vision Australia and World Vision International. We will ask the AGM to elect David for a full 3-year term. He will serve on the Development Committee alongside Kylie.

We have also established two more Board committees to sit alongside our two current committees of Development and Finance, Risk and Audit. These are a Marketing Committee to be chaired by Shirley Reeder, and a Governance and People Committee to be chaired by Janelle Richards. These four committees will strengthen our governance capacity. At the November 2022 AGM we will be asking members to re-elect two of our current Board for further three-year

terms.

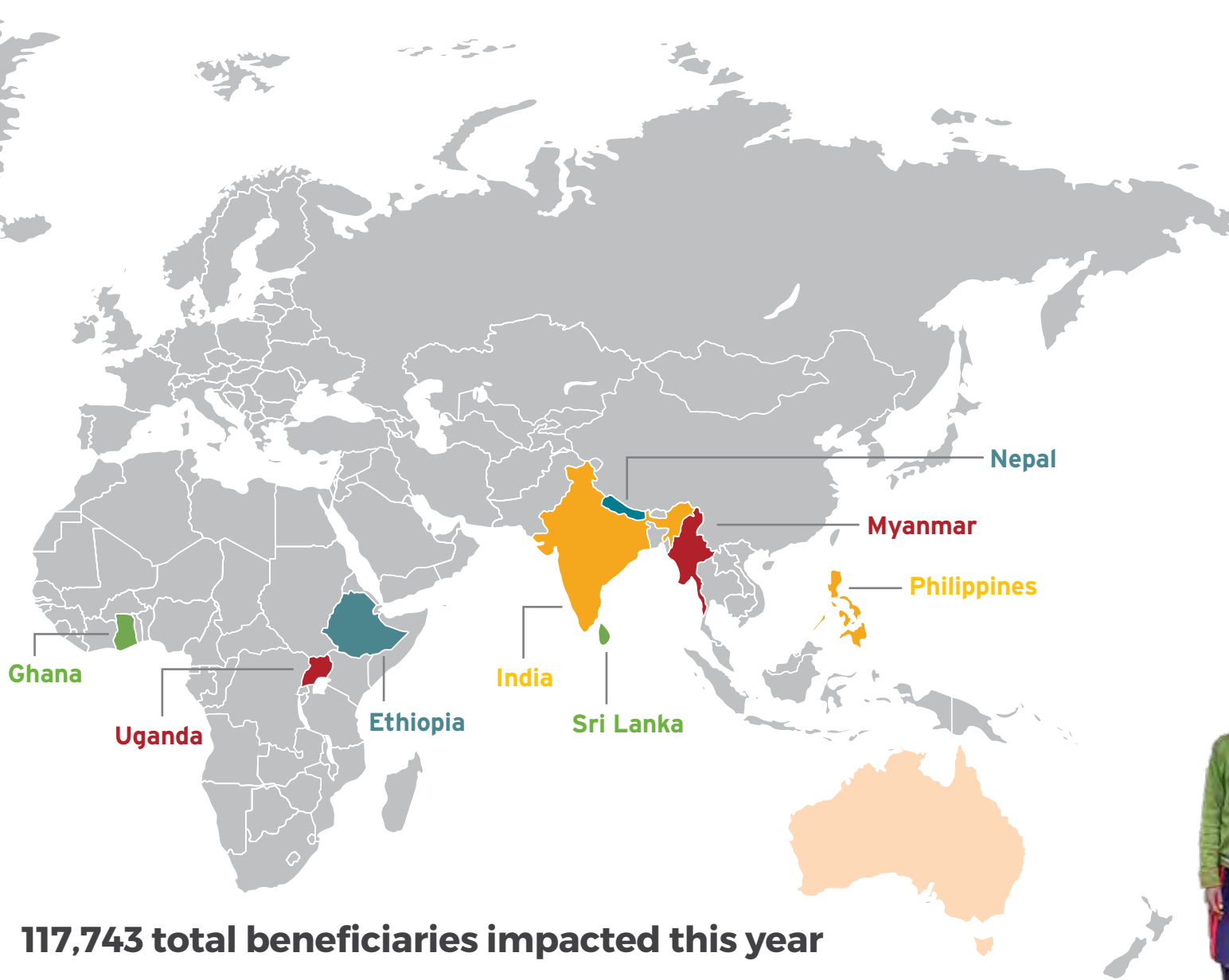
Finally, I want to thank all staff for their efforts, and each member of our Board for their continued service to INA, the hours they have provided voluntarily, and the professionalism they show at all times.

With a grateful heart,

A handwritten signature in blue ink, appearing to read 'Ian Curtis', written in a cursive style.

**Ian Curtis AM**  
Board Chair

## WHERE WE WORK



**117,743 total beneficiaries impacted this year**

“

**I never thought I would walk again after the accident. I am happy that I can now walk with ease and I am at school enjoying my lessons ”**

**Angel**, a Linked child, just 10 years old who suffered a severe accident to his leg was supported and able to get a prosthetic limb as well as additional educational support during his recovery. Now he can continue to go to school and work towards reaching his goal of becoming an engineer in future.







## ETHIOPIA

**Partner: Bole Bible Baptist Church (BBBC)**

Community-Led Total Sanitation and Hygiene (CLTSH)  
Shurmo Maternal and Child Health  
Shurmo Education and Livelihood Development (SELD)



## PHILIPPINES

**Partner: Vineyard of His Grace Ministries (Vineyard)**

Education and Economic Empowerment (EDEE)



## GHANA

**Partner: International Needs Ghana (INGH)**

International Needs Child Assistance Project (INCAP)



## NEPAL

**Partner: Human Development & Community Services (HDCS)**

Strengthening Sustainable Maternal & Child Health Systems  
in Rukum District  
Improving WASH and Livelihoods in West Rukum (WALI)



## INDIA

**Partner: ACTS Group of Institutes (ACTS)**  
Allahabad Empowering Women and Girls (EWG)

**Partner: Krupa Inc.**  
Empowering Prison Inmates & their Families (EPIF)

**Partner: Development Association for Integrated Activity (DAIA)**  
Empowering Vulnerable Communities (EVC)  
Rural Upliftment Programs and Awareness (RUPA)



## UGANDA

**Partner: International Needs Uganda (IN Uganda or INUG)**

Agri-Business for Community Development (ABCD)  
Improving the Wellbeing of OVCs, their Households &  
Communities (INCAP)  
Empowering Mothers, Alleviating Poverty Project (EMAP)



## MYANMAR

**Partner: Karen Women Empowerment Group (KWEG)**

Enabling and Strengthening Child Protection in the  
Community (ESCP)



## SRI LANKA

**Partner: International Needs Sri Lanka (IN Lanka)**

Ensuring the Rights of Children through Empowering Women  
& Strengthening Communities (ERCEW)

# OUR STRATEGY

As INA approaches our **50th year** (1974-2024), we continue to work with donors and partners to help women and children in the poorest countries achieve their God-given potential.

## FOCUS ON WOMEN AND CHILDREN

INA's work focuses on supporting marginalised and oppressed women on a pathway out of poverty, this includes rural, single, lower caste, unemployed, women with disabilities and geographically isolated women. It's evident that empowering women markedly improves childhood cognitive development, growth, early learning, and nutrition outcomes.

## INA'S PROGRAMS ARE INCLUSIVE

Through authentic local and long-term partnerships in developing countries, INA targets specific priority issues to achieve sustainable poverty reduction and community wellbeing. These programs are built on local capacity to drive positive change to systems that respond to the needs of the community.

INA serves regions with the greatest poverty - **Eastern Africa, South Asia, Southeast Asia, and the Pacific** - to

remove barriers that prevent women and children from living their fullest lives.



**Health, Education and Livelihoods** are the key pathways out of poverty.

The scale and impact of **gender-based violence** and **climate change** are cross-cutting challenges to development progress and INA's capacity will be developed in these areas moving forward. Additionally, technology is providing new solutions to address these opportunities and challenges.

**Education** is a human right and helps ensure equal opportunities and an escape from poverty.

**Better health** underpins human happiness and wellbeing, and healthy populations live longer and are more productive.

**Livelihoods and resilience** ensure people are able to make a living and be self-sustainable.

**Gender equity to ensure gender fairness**, with a particular focus on gender-based violence has become a systemic and cultural challenge in many parts of the world, especially in developing nations.

**Climate change** magnifies the impacts of population growth, poverty, and rapid urbanisation.

**Humanitarian assistance** is provided for communities who need immediate material and logistic assistance, often because of natural disasters, wars, or famines. We do this to alleviate suffering and help maintain human dignity. In **2021, for example, 235 million (or 1 in every 33) people needed humanitarian assistance and protection due to conflict and natural disasters**. These responses deal with needs arising from challenges such as the COVID-19 pandemic, climate events and political upheavals. To deliver this strategy, additional capable, passionate, and values-driven staff, with new ideas and the capacity to deliver these have been recruited.

Additionally, Australian youth have a key role as current and future supporters of overseas development programs and the achievement of greater global equity. INA supports and informs Australian

youth to be **better informed and active global citizens**. This is achieved through information sharing, alignment with the Australian Curriculum and student agency/youth action across Australia in support of development programs and projects.

**INA aims to achieve the following key milestones by 2025:**

**FORM PARTNERSHIPS WITH AT LEAST 4 NEW FIELD PARTNERS in Africa, Asia, or the Pacific**

**Introduce additional cross-cutting focus areas of GENDER-BASED VIOLENCE AND CLIMATE CHANGE**

**SECURE \$540,000 IN GRANTS TO DRIVE INNOVATION IN SUSTAINABLE DEVELOPMENT**

**DEVELOP SCALABLE EDUCATION PROGRAMS THROUGH 316 SCHOOL EVENTS**

**SCOPE AND LAUNCH A SOCIAL ENTERPRISE to support funding of development projects, including period poverty**

# CRISIS AND EMERGENCY RESPONSES

With **your support**, INA and our in-country partners quickly responded in times of emergency and crisis - **when it mattered most**. Over this financial year, you provided aid to the brave and vulnerable Ukrainian refugees during times of continuing war and incredible hardship. Additionally, in **Nepal**, you provided 100 people with free emergency health services through the Chaurajahari Mission Hospital to women, children and families who were in critical conditions and could not afford care.

At the start of the **Ukraine** Crisis, the IN Slovakia and IN Romania teams found themselves in the middle of a humanitarian emergency as a large number of Ukrainian refugees fled across the border from Ukraine into Slovakia and Romania.

During this time, both teams rolled out **emergency response relief** and were able to support over **140 refugees** (including over **80 children**) with hot meals, shelter, spiritual and emotional counselling, and living necessities.

**55+ refugees received spiritual counseling** and psychosocial support through group and individual meetings, women's support groups and day camps for families.

## CARING FOR THE MOST VULNERABLE

**At least 80 of the 140+ refugees supported were children**, and 29 of those have been placed in the **International Needs Kindergarten Educational Program**, specifically organised for them during this crisis so that they could continue their education.

“**Words are too poor to express the emotions, the pain, the fear the refugees go through. Thank you for being part of us during this spiritual battle.**

**International Needs Romania**”

Older children were also supported with internet access to attend school remotely and attend regular youth meetings.

All children received spiritual counselling and psychosocial support, additionally **22 children** were supported by volunteers through outdoor and group activities outside of the locations where they are living.

*“When they came, they had only a few clothing items with them, we were able to provide them with **clothes and shoes, hot meals and groceries**, as well as **transportation and medical help**. We bring them to Church and hold bible studies, and help them with their documents for long-term stay... **We want to thank you for supporting and helping us be a blessing to these people! May God bless you!**”*

- International Needs In-Country Partners



Maimi recovering after surgery

Maimi, a 65-year old woman is just one of the 100 people who received free health services at the Chaurajahari Mission Hospital in Nepal. She was admitted to the hospital with a leg fracture and a life threatening secondary infection. Maimi's family were extremely worried about how they would afford the treatment necessary for her recovery as they are already struggling financially. Due to the seriousness of her injury, she needed surgery and to stay in the hospital for over one month to recover. Thanks to your support, doctors were able to provide her the surgery and treatment she needed at no cost to her or the family. Her condition has continuously improved and she is incredibly grateful for the treatment provided to her. Her sons also share their immense gratitude to the doctors, hospital, and all who made her recovery possible.

# CHILD RIGHTS & EDUCATION

It is well established that education is the **key to breaking the poverty cycle**. If all adults completed secondary education, global poverty would be **halved**. The COVID-19 pandemic has resulted in learning loss among many students, especially the most marginalised ones, pushing millions back into extreme poverty. After two years of school closure, many children could not return to school for many reasons. Some were forced into early marriage, while others could not find the motivation to continue their studies.

It has been a top priority to get students back to school and provide them with the necessary support. INA, together with our partners, provided remedial and accelerated learning opportunities and study materials to support **more than 3,000 children**.

In the **Philippines**, our partner, Vineyard, signed a memorandum of understanding (MOU) with **3 local schools** to provide after-class learning spaces to students. Volunteers and teachers were recruited to support the students in their learning. Vineyard also invited teachers to hold online classes for children. While virtual engagement has never entirely replaced face-to-face teaching, this has helped sustain learning interest among students, many of whom were on the verge of dropping out of school.

In **India**, our partner ACTS has provided small “cluster groups” for girls using outdoor spaces to support learning. In the remote area of Allahabad in northern India, many girls traditionally leave schooling early to get married. A priority has been to keep them in school and to prevent future early marriage or child labour. We supported 450 girls in Allahabad with skill training and remedial education lessons.

In **Myanmar**, despite ongoing political challenges, our partner KWEG managed to **support 471 children** by establishing peer-to-peer learning sessions. These sessions provided peer support to students who often missed out on school due to political instability. **137 parents** were recruited to support and monitor

the progress of the children's learning as well as to support the peer-to-peer learning sessions. In addition, grants were provided to 6 children's groups to implement projects to **advance children's rights and empowerment**.

In **Ethiopia**, **6 MOUs were signed with 6 local schools** to provide learning materials and remedial lessons to students needing education support. To ensure that we directly served community needs, we invited **167 parents and teachers** (110 men and 57 women) for school consultation meetings to co-design projects. **1,352 students** (645 boys and 707 girls) participated in hygiene classes covering personal hygiene, hygienic toilet use, menstruation hygiene, food safety, safe drinking water and environmental sanitation. Period poverty is a priority, and 14 toilets and 6 handwashing facilities were provided along with hygiene pads to support menstruating girls at school and to help keep them in education. In addition, **6 water tanks of 2,000-litre capacity** and **6 water purification systems** were given to **6 schools** to provide clean drinking water.

**1,054**  
**LINKED CHILDREN**  
were supported to access education

**700+**  
**FEMALE STUDENTS**  
in schools participated in  
educational WASH programs

**1,776**  
**STUDENTS**  
received study materials  
in Uganda



## CHILD RIGHTS & EDUCATION ... OUR STORY

Dubancho kebele is one of the Bole Bible Baptist Church's (BBBC) key program kebeles. In the kebele, there was not access to an early childhood education centre (ECCE) to fulfil even minimum standards.

Children aged 4-6 had to attend preschool in formal classrooms and use the same desks as primary school students. The services provided to children were below standard, lacking adequate classrooms, facilities, play spaces and teaching resources.

To improve these programs and create access to education for children aged 4-6, the project constructed one learning block consisting of two classrooms in the kebele. The classrooms included toilet

facilities for children with disabilities, learning pictures and other resources, and child-size desks and tables. As a result, 100 children (50 boys & 50 girls) aged 4-6, now can learn in a contemporary ECCE centre. Additionally, the government assigned 2 well-trained teachers and centre supervision.



Children playing on their new playground at the ECCE centre.



# HEALTH

The COVID-19 pandemic has adversely affected global health. During the lockdowns, many mothers could not go to the local Health Posts and Health Centres for prenatal and postnatal check-ups. This has **further posed risks to the already high maternal and infant mortality rates** in the local communities that we serve.

INA worked with our partners Bole Bible Baptist Church Childcare and Community Development (BBBC) in Ethiopia and Human Development and Community Services (HDCS) in Nepal to implement **Maternal and Child Health-related activities to benefit more than 35,000 mothers and 8,235 children.**



Due to the condition of the Shurmo Health Centre in Ethiopia many women chose to give birth at home instead of coming to the Centre, which put themselves and their babies at risk of life-threatening complications. Many newborns would also miss out on their vaccinations due to not being born in a medical facility.



Thanks to the new waiting room constructed at the Shurmo Health Centre pregnant women are receiving better care. Each month, more women are choosing to give birth at the Health Centre instead of at home where there are serious risks for the mother and child's health.

## 50,000

WOMEN

were reached with Health information through radio broadcasts

## 35,000

MOTHERS

benefitted from Maternal and Children Health related activities

## 8,235

CHILDREN

benefitted from Child Health support and medical care services

In the communities that we serve, the supply of **qualified health workers** has been a critical challenge for the local health facilities. Therefore, in Ethiopia, **we trained more than 93 midwives on safe delivery and emergency obstetric care as well as the Prevention of Mother to Child Transmission of HIV.**



Because of the new health centre in Ethiopia, Mrs. Gedamu was able to give birth in a safe environment instead of at home avoiding the risk of serious bleeding and the many complications that she had with her older three children.

In remote places in Nepal, health volunteers play a critical role in providing basic and emergency health services to mothers and children. Therefore, in Nepal, **we trained 144 female Community Health Volunteers from 16 communities on antenatal care.**

We supported physical facilities of Health Posts and Health Centres. **In Ethiopia, we constructed one waiting room in a local Health Centre and renovated two Health Posts. We also provided medical supplies to 14 Health Posts and 3 Health Centres** in the country.



A baby receiving her vaccination in Nepal.

The medical equipment includes, among others, adult and child weighing machines and height scales, blood pressure apparatus (BPA), digital thermometers, autoclaves, and foetus scopes. **More than 50 types of essential medicine** were also purchased and distributed. These include adhesive



A newborn baby born at the reconstructed Shermo Health Center in Ethiopia receiving her first medical check up.

## HEALTH ... OUR STORY

plaster with zinc oxide, amoxicillin 500mg with clavinet acid 125mg, alcohol 70% solution, ciprofloxacin-500mg po tablet, cloxacillin-500mg-capsule, dexamethasone 0.1% eye drop, diclofenac sodium 50mg po tablet, gentamycin 0.3 % eye drops, metronidazole 250mg capsule.

In many of the communities that we serve, prisoners are often deprived of basic health care. Therefore, in India, **we supported 465 prisoners to have access to basic health care** so that they could be in a good health as they leave the prisons to be with their families and loved ones.

Below: Mrs Radiya vaccinating her child at Shurmo Health Centre HP.



### Sima - Nepal

Due to lack of access to maternal and child health education and resources in the Rukum district of Nepal, many women **lack the knowledge necessary** for a healthy and safe pregnancy and childbirth. The absence of this knowledge has resulted in a growing number of **women facing dangerous and life-threatening difficulties** during pregnancy and childbirth resulting in preventable illness and death for mothers and their babies.

Sima Oli, a participant in the Mother's Groups **suffered from extreme bleeding** during her first pregnancy which put both herself and her baby at risk. Since attending regular health education classes through the Mother's Group, she has **learned safe childbearing practices** and has now given birth to her second child **without any risks or complications**. Due to the new

knowledge obtained from these training sessions, she now attends regular growth monitoring for her second child and ensures her child is immunised on time.

In partnership with INA, Human Development and Community Services (HDCS) works in these communities to provide Maternal and Child Health training to mothers. The training in these Mother's Groups educates them on best practices for safe pregnancies and childbirths. The training sessions were conducted via the local radio programs and the face-to-face meetings. **It was estimated that 35,000 women including pregnant and disabled women benefited from these sessions.**

The impacts of the Maternal and Child Health training in the communities have improved women and child health outcomes and **reduced preventable death and illness**.

Sima said, *"I am grateful that I could learn all the things needed for maternal and child health through these classes which have been conducted by the project. I thank the project for now I am a healthy mother of a healthy baby. Thank you to INA for adding smiles on my life."*

Below: Due to the project, Sima learned the necessary knowledge she needed for a healthy pregnancy and safe delivery.



# SUSTAINABLE LIVELIHOODS

Poverty should not be a life-sentence. To help the poor and the marginalised escape poverty and earn decent income, we worked with our partners to introduce different livelihood programs. These include training and the formation of **Self-Help-Groups (SHGs), Community Managed Savings and Credit Association (COMSCA)** and **Village Saving and Loan Associations (VSLA)**, among others.

In **Myanmar**, we supported 42 families in livelihoods programs, all of these families reported increased income through the SHGs. In **Nepal**, we supported 240 mothers, and 120 women received training in agriculture farming while another 120 women received training on livestock rearing. To support the women farmers, 18 VSLAs have been formed to provide low-interest loans to kickstart their new ventures.



Women attend a grant support session on piggery farming in Myanmar.



Mrs. Mary P. with her chickens that are helping provide additional income for her family.

In **Ethiopia**, we supported 46 farmers by giving them improved seeds and fertilizers. To provide learning opportunities for the farmers, we organised experience-sharing tours where 50 farmers were able to learn more about small-scale irrigation, integrated farm, animal husbandry, and beekeeping. 240 of 2,370 SHG members or farmers reported that they were able to engage in at least one income-generating activity. Among these members, 40 widowed mothers were financially supported to run their small businesses. In addition, 60 poor

households were given improved sheep breeds while 60 unemployed youth were trained in different skills, such as agriculture to productively engage in farming activities that would generate income for them.

In **Uganda**, 85% of 3,250 farmers accessed regular and timely agricultural extension education as well as being able to demonstrate improved farming practices. 1,855 farmers (1,159 women and 696 men) received loans through the established VSLAs worth UGX 690,319,370 (AUD295,000). Our partner in Uganda formed 10 Farmers Associations, of which, 8 have been able to sustainably manage the associations on their own.

Below: Through the support of the farmer's group, Juliet, has established a poultry enterprise on top of maize growing and piggery which has increased her annual income by over 270% allowing her to better support her two children.



Helen, aged 28 and mother of two children is a member of Biyinja farmers' group. Through the support and training of the group she has managed to start her own piggery farm and has increased her annual income by over 366%.

In **India**, our partner DAIA provided training in tailoring for 40 marginalised women so that they could start businesses and earn income. Our partner Krupa provided skills training to 75 prisoners and ex-prisoners, through this 34 gained full employment after the training and completing their sentence.





Above: Ms. Lakshmi with her new sewing machine.

### EMPOWERING WOMEN THROUGH SUSTAINABLE LIVELIHOODS

Ms. Lakshmi, 37 years old, lives with her mother in the Sivaganga District in India. Due to a genetic condition, she is physically handicapped and unable to walk. This has never stopped her positive approach to life!

Even though her condition has led to tremendous challenges in life, she has always persevered and had a tremendous drive to achieve a better quality of life for herself and her mother. She learned how to tailor garments and even received orders from 200km away in Pudiamputhur. To do this work, she relied on a very old and unreliable sewing machine that made even simple tailoring jobs tedious and time-consuming. This made it difficult for her to make a reasonable income from her work. Her

world changed after she was invited to participate in DAIA's empowerment program, focused on helping women earn an income. She was the one of the first participants to step forward to improve her economic circumstances. Since then, DAIA has provided her with an electric commercial sewing machine through a micro-loan scheme. This has given her the opportunity to meet more orders in less time, without the down time of maintaining an old machine. She has managed to re-pay her initial loan and has increase her family's standard of living. These achievements have inspired others in the program!

Above Right: Michael speaking at the CoMSCA Summit to share with others how the group has positively impacted his life.



Michael Valderama, 43-year-old father, is married with five lovely children. Michael and his family were financially challenged because he was unemployed for three months. He put up a small store but that was not enough for his family's needs and utility bills. There were times that his family could not afford to buy food for his children. What his family usually does is to buy street food like fish balls and meatballs for one peso each, just to add flavour to their rice meal.

Michael and his wife often fought because they did not even know where to get money and were buried in debt. Numerous debt collectors came, and Michael did not dare to show up. They often knocked at his door, but Michael said the family, in desperation, pretended no one was around. They avoided making any noise and limited movement at home, even if it was too hot, just to hide from creditors. Because of this, Michael decided to take care of the children while his wife found work away in Manila. As head of the family he needed to take care of the kids and keep the house while looking for side jobs. He struggled with budgeting the small amount his wife

used to send every time she received her wage. Until Michael heard of CoMSCA.

Michael first attended the CoMSCA orientation. Vineyard staff shared with Michael and his family this unique way of saving while earning. When Michael had the opportunity to borrow money from the group, he was able to establish a small payment centre and it grew little-by-little, so he started to save and pay the family's debts. He also bought items for his children. Michael already has five branches of TrueMoney Payment Center and other businesses.

Michael and his family had to endure eating cheap fish balls, but now Michael can serve real fish to his children. Michael was very thankful to CoMSCA because of this he says. He always tells people not to give up in times of struggle. CoMSCA groups are always ready to help. Be financially educated and have financial freedom.

“  
**Never give up in times of struggle like this. CoMSCA groups are always ready to help. Be financially educated and have financial freedom.**

**Michael Valderama**  
- The Philippines



# PROJECT EVALUATION

INA has worked with International Needs Uganda on four-year cycle farming projects since 2008. In June 2022, we concluded the Agri-business for Community Development (ABCD) project.

The four-year project has benefited more than **52,000 farmers** and their family members. During this cycle, we have set up **10 Farmers' Associations (FAs)** in Uganda's Buikwe, Mukono and Kayunga Districts, consisting of **3,460 members** (1,950 women and 1,300 men). This is a significant increase from 671 members in 2017.

***This membership growth is attributed to improved leadership capacities and clear member benefits that have attracted more farmers to join.***

The final evaluation of Project ABCD shows that 3 of the 10 FAs can now operate with surpluses after deducting the FA operating costs. The remaining 7 FAs are running at breakeven. These FAs build system sustainability through the Village Savings Lending Associations (VSLA), with members contributing their fees to the FAs, which are lent to farmers with minimal interest. **94.3% of farmers** have experienced household income growth from the 30% baseline in 2017.

This increase of 64.3% is a testament to the effectiveness and impact of the project. The household income diversification was shifted from the 21% baseline in 2017 to 70.8%. **99.4% of farmers** can now meet their household nutritional requirements as compared to the baseline of 46% in 2017.

Project ABCD also has a solid and deliberate focus on women's empowerment. **92% of men and 86% of women farmers** feel that women are jointly involved in FA decision-making and their daily lives. This is encouraging as we aim to empower the standing and capacities of women, who are often subject to many forms of inequity.



Alizik, a member of Katunda farmers group, says, "I experienced a transformation in my household by having food security for the first time".



INA Uganda field worker interviewing a woman in the community.

Building on the success of Project ABCD, INA and International Needs Uganda have launched a new three-year cycle (July 2022 - June 2025), **Project Sustainable Livelihoods for Farmers (Project SLF)**. The project aims to set up 10 additional FAs in Uganda's Kayunga and Jinja Districts. The project will cost approximately AUD \$450,000 over the next three years. It will recruit **2,800 subsistence and smallholder farmers** to join the FAs and improve their livelihoods by adopting improved and profitable farming practices while linking them to favourable loan funds.

Project SLF will involve existing Project ABCD FAs to train the new FAs on FA

established FAs in Kayunga District and Jinja District.

**Through this approach, the FAs network can sustainably grow and support one another.**



Regus, a member of one the FA groups, has managed to pay back the entirety of her loan and is now able to provide all her grandchildren access to quality education and feed her family 3 nutritious meals a day.

“  
Thank you  
for blessing  
my family”



# AUS GOVERNMENT FUNDING

INA acknowledges the significant support from the Australian Government through the Department of Foreign Affairs and Trade's (DFAT) Australian NGO Cooperation Program (ANCP). Being one of around 55 charities receiving this support, we recognise the responsibility to ensure the highest levels of compliance and quality provision.

INA has been **fully accredited with DFAT since 2004** and this was again extended for a further five years after a thorough re-accreditation process.

Being accredited means that ANCP provides annual grants for some of INA's key projects. These program funds also rely on INA supporters to contribute. When INA fundraises for a project that is ANCP-funded, there is an opportunity for donors to have their contributions combined with this funding to maximise impact on the ground. INA and supporters will contribute \$1 for every \$5 received from the Government, up to the value of the ANCP grant.

This is a wonderful way for donors to see their donations reach more people and do more! And we acknowledge the wonderful work and impact that the Australian Government is enabling through DFAT and ANCP are enabling as well.

Right: A mother's group in Nepal conducting a health session to help educate women on maternal and child health issues and best practices

## ANCP-FUNDED PROJECTS:

### Ethiopia

- Scale Up Maternal and Child Health Outcomes in Lemo District
- Shurmo Education and Livelihood Development (SELD)

### Myanmar

- Enabling and Strengthening Child Protection in the Community (ESCP)

### Nepal

- Strengthening Sustainable Maternal & Child Health Systems in Rukum District
- Improving WASH and Livelihoods in West Rukum (WALI)

### Uganda

- Agri-Business for Community Development (ABCD)



**Australian Aid**

# PARTNERSHIPS FOR GOOD

## VIDYAJEY FOUNDATION

The VidyaJey Foundation contributes to INA's work with Krupa and DAIA in southern **India**. Krupa's Empowering Prison Inmates and Families project aims to **reduce reoffending, and trains prisoners and their families** in skills to earn an income. INA and DAIA started a partnership in July 2020 to support Livelihoods and Health activities for **vulnerable community groups**, including the elderly and Dalit communities, and commenced a Rural Upliftment Programs and Awareness project.



Your partnership is giving families an opportunity for a brighter future, thank you!

INA, project partners and project participants thank VidyaJey Foundation for their **past and ongoing support**.

Below: Edith, a member of one of the farming groups in Uganda has now been able to invest the money she's earned thanks to the support of the group into her tailoring enterprise to help diversify her income.



## THROUGH THESE ANCP AND DONOR-FUNDED PROJECTS:

**117,743**  
beneficiaries  
were reached

**33,660**  
children were  
championed

**455**  
children living with a  
disability were supported

**73,129**  
women were  
strengthened

## OPERATION TOILETS (ROTARY INTERNATIONAL)

Operation Toilets Australia Inc. (OTA), a project of the Rotary Club of Box Hill Central, is an organisation focusing on water, sanitation, and health (WASH) projects in **India** and **Ethiopia**.

In partnership with INA, the Bole Bible Baptist Church (BBBC), and the Rotary Club of Addis Ababa in Ethiopia, OTA has supported the Community Led Total Sanitation and Hygiene (CLTSH) approach to inspire, engage, and empower the community to build their own home VIPL (Ventilated Improved Pit Latrine) toilets, use safe in-home hygiene practices and stop open defecation. Toilet blocks and handwashing facilities have also been constructed in four schools, and leaders trained in implementing a unique Schools Led Total Sanitation and Hygiene (SLTSH) program. **The project benefits 30,000 people residing in the Ethiopian Shurmo community, as well as 6,000 students.**

INA's partnership with Operation Toilets Australia and the Rotary Club of Box Hill Central has been strong for many years. Our partners and the communities we work with look forward to continuing this relationship.

## FULLIFE FOUNDATION

The Fullife Foundation was established to make a positive difference to **the health of women and children in Ethiopia**.



A traditional latrine for girls at school in rural areas of Ethiopia



A new disability inclusive latrine for girls, thanks to your support

The latest collaboration between INA and Fullife Foundation in Lemo District, includes the **construction of a water reservoir** to provide clean water to households, and support for the Shurmo Education and Livelihood Development Project through **ChildLink**. However, the highlight of our partnership is a Maternal and Child Health project, equipping Health Centres and Health Posts in the target areas, **constructing waiting rooms** at Health Centres for pregnant women, training healthcare workers and volunteers, and providing community Health education. The strong partnership between INA and Fullife has resulted in improving the lives of **approximately 10,351 people** in the past year alone.

Also, in this financial year, INA and program partners invited the Fullife Foundation to share their experiences and perspectives of being a donor at an online field learning program.

INA is grateful to Fullife for engaging actively in our projects and rallying support through their network within the pharmacy industry to join us on our **journey to make a difference**.

## MISSION ENTERPRISES

Mission Enterprises, a Christian not-for-profit with a focus on alleviating poverty, generates funds to support Christian ministries and community development organisations. Mission Enterprises partners with organisations such as INA to increase economic empowerment, provide educational opportunities, improve health outcomes, and stop human trafficking.

**This year, Mission Enterprises provided INA with support to ensure that girls in remote Nepal remain in school and complete their education.**

INA is grateful for the continued long-term partnership with Mission Enterprises, and their commitment



A group of female students in Nepal attending class outside while COVID-19 safety measures were still in place to ensure their schooling could continue.

to follow Christ's example of caring for the world's most marginalised and vulnerable people.

INA is grateful to Mission Enterprises for their **continued long-term partnership**, and their special support of our projects in Sri Lanka, Ghana, the Philippines and Nepal.

## EB CHARITABLE TRUST

EB Charitable Trust, formed by **Adelaide confectioner William Edward Blackeby**, has been supporting INA for over 20 years. In celebration of their fathers' life, his children Graham, Roger, Ann, Paul and Peter, established a one-year project, **Empowering Women Alleviating Poverty in Uganda**, enabling vulnerable mothers and their children to improve income and future opportunities.

300 single mothers were trained in financial literacy and business management practices, enabling participants to develop skills in planning and managing income-generating activities. Loans were provided, and by the end of the project, women were operating businesses such as retail, business stalls, farming and animal husbandry. Their incomes increased and diversified, children were able to return to school, and their households achieved food security during a time of broader economic uncertainty caused by COVID. Thanks to EB Charitable Trust, hundreds of children living in extreme poverty were able to have a brighter, healthier future.

# DONOR ENGAGEMENT

To those that continue to enable the work of INA and help fulfill the promise to rise women and children out of poverty and into their God-given potential, we sincerely thank you. You make it possible for the most vulnerable children in the world to break free from the chains of poverty, through your care and action you provide them the wings to fly into a brighter future.

Through INA's Marketing and Communications team, supporters are connected with the beneficiaries' stories and the very real impact of their generosity through consistent reports, campaigns, newsletters, photos directly from the field and more.

For as long as INA has been working, it's been the joy of sharing the impact made by the generous donors that has driven the passion of the communications team. In times of need, the team works to deliver news to supporters to act and help those who are most vulnerable, and year after year their generosity comes through.

Below you will find a few of the campaigns shared by the team in this financial year.

## CHILD LINK

INA continues to keep Linked supporters updated throughout the year so they can stay connected with their child and informed of their needs as well stay up to date on their progress. Regular updates distributed via mail and email were sent to supporters that included positive impacts in the country of their Linked child, as well as stories of many children within the ChildLink program. Read more on the achievements enabled this financial year through ChildLink on page 24.

## she

SHE supporters also received updates through the year about the positive stories and outcomes for girls and women made possible through the projects. INA partners continued to support girls and women in ways crucial to their development - including providing vocational training, access to education and the opportunity to stay in school, hygiene resources, mental health and spiritual counselling and much more. We thank SHE donors for their continued contributions that have enabled girls and women to reach their full potential. Read more about SHE on page 24.

Left: A group of supported children returning to school after COVID in the Philippines.

Right: A mother and daughter pictured together with their new cattle that has helped to increase their family's income and quality of life, thank you for making this possible!

## BIRTHDAY APPEALS

The Birthday Appeals for this financial year focused on providing Cheer for Linked children providing them light during a dark and difficult time as they continued to recover from the repercussions of the pandemic in school and at home. Funds raised helped ChildLink partners to provide resources they truly needed to the children.

## GIFT CATALOGUE AND ONLINE STORE

This year Gift Catalogue items continued to be offered in the Online Store on INA's website. Items continued to be available all year long, not just at Christmas. This meant that supporters could make an impact at any time in many different ways such as by helping provide nutritious meals for children in Ethiopia or mental health counselling for children

in the Philippines. They could even donate to help train a self-help group in Sri Lanka as well as help purchase health post equipment in Nepal for a women's hospital!

## TAX APPEAL

Supporters really came through again this year, to generously support INA's project this tax season. Contributions to this appeal were combined with funding from the Australian Government's ANCP as well as being matched dollar-for-dollar by a group of generous INA supporters. It's an incredible time to give when donors know their donations will go even further!

## CHRISTMAS APPEAL

The focus of the Christmas 2021 appeal was the idea of belief, that is believing in something greater than ourselves and



# EQUIPPING THE NEXT GENERATION

through this focus we told the story of a girl from Uganda whose life was forever impacted by the support of the generous donors. The appeal again invited donors to have their donations matched and combined with ANCP funds. Thanks to the Givers Fund, donors could see their gift doubled making it an especially impactful Christmas for those who truly needed it.

## URGENT OR EMERGENCY APPEALS

We are especially appreciative to those that acted and gave during times of crisis this year. INA and our in-country partners responded with urgency to let donors know when emergencies happened and to help vulnerable people during some of the darkest moments of their lives. Over this financial year, donor generosity helped to provide aid to the brave and vulnerable Ukrainian refugees seeking a safe haven during war and incredible hardship. Additionally, in Nepal, free emergency health services were provided to women, children and families who were in critical conditions and could not afford care. You can read more on INA's response to emergencies on page 11.

**If you contributed in any way to any of the above, all we can say is... thank you! It is through your support that women and children are able to reach their God-given potential.**



## THROUGH INTERNSHIPS

This financial year, INA's **partnerships with universities continued to be strengthened**. This was part of INA profiling careers in international development, supporting universities and helping students gain valuable skills.

Following INA, our interns' stories have included working for the United Nations in Europe, providing aid in Chad and Senegal, and assisting in refugee camps in Greece.

Shadi, a pre-law student in Victoria, writes of her internship:

*"I've been interning at INA as a Monash student since June 2022, and I've loved every moment! My most important achievement from this internship is the insight I have gained into a career I'd like to pursue.*

*I put my hand up to join on as a facilitator for a Just Like Me (JLM) workshop which had a great impact on my confidence and public speaking skills.*

*I also helped edit INA's strategic plan, researching into what INA does and why they do it.*

*I found that INA engages in systemic advocacy by influencing positive long-term changes to systems that respond to the needs of the whole community. INA's ChildLink program, for example, directs funds not only to the child, but to their parents and community at large. I was able to see this in practice with the Programs team.*

*Interning at INA has given me the opportunity to further my skills in marketing, networking, writing and other professional skills."*

**“ Reflecting on my internship with International Needs Australia, I know that it was this experience which helped shape the events that led to where I am today.**

William



## ONE YEAR ON: FOLLOW-UP WITH WILLIAM

William, who joined INA from Adelaide in 2020, reflects on his life one year after INA:

*"Reflecting on my internship with INA, I know that it was this experience which helped shape the events that led to where I am today.*

*In the final months at INA, I was accepted into a selective research university in Paris, where I am studying a Master of International Governance and Diplomacy. A year into my program, I was also selected for a full-time internship with the United Nations Office of Drugs and Crime (UNODC) in Vienna.*

*I spend my days working to support programming and operations and am pleasantly surprised by how often I can make a valuable contribution to this work, largely by leveraging many of the skills I developed during my time with INA.*

*I'm not sure what's next for me. However, it is in part due to interning with INA that I feel capable in the face of the exceptionally dynamic and multi-dimensional challenges inherent in both international development and international civil service."*

## CHILDLINK & SHE



INA's child sponsorship program, ChildLink, supports children and their communities through the generosity of our valued donors and the dedicated work of the support staff in our partner countries. **Our ChildLink Heroes form the lifeblood of our work and help us empower our partners to carry out our vision of a just world where all people are treated equally to reach their God-given potential.**

ChildLink is unique in that it adheres to contemporary, community-focused standards of international development by not only providing resources and education to the donor's linked child but also to his or her entire community. We believe that **"poverty should not be a life sentence"** for children or their families. And we **sincerely thank the many ChildLink supporters** for believing this through your actions.

One of the children in our ChildLink program is Bambi F. from the Philippines. Bambi's father works intermittently as a delivery rider with a very limited income that is not sufficient to provide for the needs of Bambi's family, which struggles to meet their most basic needs. This impacts family life and that ability of children to attend school.

Bambi helps her family by sweeping during her spare time and loves to play with her younger siblings. She wants to be a teacher someday to be able to share her knowledge with other children to help them have a **better future.**



"When I get big, I want to be a teacher," says Bambi. Your support is providing her with the chance to achieve this dream!

This financial year, those Linked supporters enabled great work that includes:

### CHILDLINK IMPACT

**1,054**  
LINKED CHILDREN  
were supported to access  
quality education

**6**  
PARTNER COUNTRIES  
working on the ground  
in the poorest communities

**1,776**  
STUDENTS  
received study materials  
in Uganda

**364**  
FAMILIES AND 11 PARENT  
VOLUNTEER LEADERS  
received hygiene kits and a  
Christmas support package

*Thank you!*



Akosua, a Linked Child in Ghana who has been supported through ChildLink since she was 5 years old says:

“ I admire the passion and energy that International Needs staff (especially Auntie Lily) work with. She inspires me through her actions and words.

I also want to be an agent of change in my community.

I want to volunteer my time to also help younger people in my school because I also have something to offer now. ”





Our SHE program gives donors the opportunity to empower some of the most disadvantaged groups and individuals - women and girls in developing countries. **Mothers, sisters and daughters** alike now have had the chance to find sustainable work, attend quality education programs and access adequate standards of sanitation thanks to the generosity and support of our **SHE Champions**. SHE's work in empowering women and girls is exemplified in an INA-supported project in **India**, where **over 600 women and girls per year** are now regularly participating in health awareness programs and training.

The success of the SHE program is best represented in Nambogo, a wife and mother to four children, including two daughters, who she couldn't afford to send to school. **She knew her children would have limited opportunities for a better life without education**, but it was not possible on her family's annual income of only AU\$269.

This changed after joining **Uganda's Buikwe Multi-Purpose Farmers Association (FA)**, a group that is supported by our SHE Champions. Nambogo joined the group hoping to learn new skills to increase her family's income and improve the quality of life for her children.

Through the group, she learned **new farming practices, financial literacy and business management, with support from the ABCD project** (the Ugandan Agribusiness for Community Development).



Because of your support, Nambogo has transformed not only her life but her children's life. She now can afford to send her 4 children to school giving them a brighter future full of opportunities to be who they were meant to be.

## SHE IMPACT

**700+**  
**FEMALE STUDENTS**  
 in schools participated in educational WASH (Water, Sanitation and Hygiene) programs

**2,245+**  
**UGANDAN WOMEN**  
 received regular extension training in farming and animal husbandry

**1,159**  
**FEMALE FARMERS**  
 in Uganda received loans

**120+**  
**WOMEN FROM 18 MOTHER'S GROUPS**  
 in Nepal received 3 days of extensive farming training

*Thank you!*



Above: Your support is transforming livelihoods by providing opportunities to women to earn sustainable incomes for themselves, thank you!

# AUSTRALIAN SCHOOLS EDUCATION & ADVOCACY PROGRAMS



*Over the last year, INA's educational team has seen some positive and exciting transformations.*

The Australian public and youth can better understand the global challenges and goals reflected in the Sustainable Development Goals (SDGs), the aid effectiveness agenda, and global interdependence. Youth have a crucial role as current and future supporters of overseas development programs and the achievement of greater global equity. A culture of philanthropy, social enterprise, global understanding, and compassion is key for future generations.

*INA supports and informs Australian youth to be better informed and active global citizens.*

This is achieved through information sharing, alignment with the Australian



Curriculum and student agency/youth action across Australia in support of development programs and projects.

**The following programs will help achieve this goal:**

- **Just Like Me (JLM)** workshops focus on global poverty for primary school **Preps to Year 7s** and teach social justice and global poverty through immersive activities. Each child is personally challenged to reflect, act and understand the lives of children overseas in context to their own experiences.
- **Health and Human Development/ Global Health workshops** are interactive sessions about health in a global context for **senior secondary students**. The theory about the burden of disease in low-income countries

is brought alive through INA's health projects.

- **Act Your Purpose**, a year-long program for **Year 9 and 10** students to help find and solidify passion for social justice or innovation, brainstorm action, develop a campaign and act to guide future action and involvement. AYP develops a culture of philanthropy, social enterprise, and global understanding and concern.
- **Gender Equity and Girls' Education workshops** address global poverty, gender equity and girls' education for students in **Years 5 to 10**.
- **Global Poverty and Democracy workshops** teach global poverty and democracy through immersive activities to **Year 5 to 10** students. This



Student's attentively listen during AYP workshop at McKinnon Secondary College.

learning activity explores a variety of democracies found in countries such as Australia, Ethiopia, Myanmar, India, the Philippines, Sri Lanka, Nepal, and Uganda.



Right: Kade Berman, the Program Coordinator of Act Your Purpose, travelled to the Philippines and worked alongside INA's charity partner, Vineyard. In his time there, he spoke at an international conference as a representative of both Vineyard and INA. In his 2-hour presentation, he spoke on Act Your Purpose and the link between youth purpose and social justice.

INA Education Programs have been implemented in **71 schools**. In addition to the **Just Like Me** workshop in 3 new schools, the **Gender Equity** workshop in 1 new school, and the **Health and Human Development** workshop in 2 new schools before July 2022, a new pilot program was developed and delivered.

**Act Your Purpose**, the newest addition to the INA educational program, **has delivered 23 workshops for over 1,100 students**. The responses have been empowering, with **over 90% of students rating the sessions 5/5 and over 95% rating the presenters 5/5**. So far, the pilot program has been delivered at McKinnon Secondary College, Trinity Grammar, and Mount Scopus Memorial College.

With the pilot program taking big strides, we hope to now be able to scale the program for additional schools, including the development of bespoke multi-year level programs

We can't wait to **inspire and motivate more students** to follow their purpose, reach their **fullest potential to make a difference** in the world and **be part of the solution** to end global poverty.



Thanks to your support, women in India are increasing their vocational skills through tailoring training that is enabling them to increase their income and become more self-sustainable.

# OUR TEAM

## MEET INA STAFF

INA is proud to have a diverse, capable, energetic, and incredibly passionate team working together to do what we do best.

**Each day, our team is committed to serving those we work with and helping women and children rise out of poverty.**



**Amanda Southwell,**  
Community  
Engagement Manager



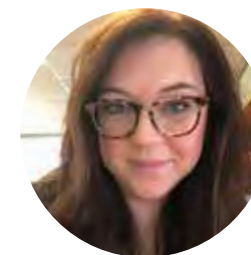
**Catherine Middleton,**  
International  
Programs and  
Compliance Officer



**Corlien Heijnen,**  
Education Officer



**David Ensor,**  
Chief Executive  
Officer



**Jenny Nicholls,**  
Marketing and  
Communications  
Coordinator



**Pam Winstanley,**  
Finance and  
Administration Manager



**Phearak Svay,**  
International  
Programs Manager



**Preeti Anand,**  
Donor Relations  
Officer



**Serene Tan,**  
Accounting Officer

We are very fortunate to have some **wonderful new staff members** who have recently joined INA, you can learn more about them on our website at [ina.org.au/about-us](http://ina.org.au/about-us)

# GOVERNANCE

## OUR GOVERNANCE

Effective governance, management of resources and compliance support our mission and ensure the highest levels of accountability to beneficiaries, partners, supporters, and regulatory bodies. This is achieved through annual audits and compliance at the highest levels with regulatory bodies, including the *Australian Charities and Not-for-profits Commission (ACNC)*, *Australian Securities and Investments Commission (ASIC)*, *Australian Council for International Development (ACFID)*, *Department of Foreign Affairs and Trade (DFAT)* and *Australian NGO Cooperation Program (ANCP)*. We work efficiently and effectively to maximise our support for overseas projects.

INA is governed by its Constitution and an elected Board of Directors. Board skills cover governance, finance, law, human resources, and development. Board committees include Finance Risk, Audit Committee (FRAC) and Development Committee (DC).

Our commitment to Gender Equality and Diversity includes policies on Equal Opportunity Employment and Diversity, Harassment and Bullying; Gender Equity and Inclusion, Gender and Development; and Disability and Development.

The Board of Directors annually reviews and approves INA's Strategic Plan to ensure continued relevance in the current operating environment. Performance is monitored and mechanisms are being developed to increase direct participation by partner organisations.

INA's Policy on Risk Management prescribes adequate controls for activities and administration and requires risks, including financial risks, to be monitored through a regularly updated Risk Register.

INA has a Policy on the Prevention of Sexual Exploitation, Abuse and Harassment (PSEAH) with public policies on Complaints, Whistle-Blower, Child Protection and PSEAH. These outline INA's reporting and incident management systems. The website also includes a complaint reporting form and referral mechanisms.

Business Continuity and Disaster Recovery covers administration and finance, donor data and Microsoft 365.

Sound Financial Management: Financial management is overseen by the Board of Directors and Finance Risk and Audit Committee (FRAC) to maximise efficiency and effectiveness.

At last year's Annual General Meeting, Ian Curtis was re-elected, and Kylie Wingjan was elected for three-year terms; Richard Lim was elected for a two-year term which will enable him to complete nine years of service to the INA Board. There continues to be a healthy gender balance on the Board and the organisation is grateful for the way our Board members give their time and utilise their various professional backgrounds in the service of INA.

In keeping with the Constitution, two Board members will retire, and both will be eligible for re-election for a further term at the 2022 AGM.

## ANNUAL GENERAL MEETING

The 2022 Annual General Meeting of INA was scheduled for the 23rd November 2022, however the Board approved moving it to the 30th November to allow time for completion of the Annual Audit.

# BOARD OF DIRECTORS



## IAN CURTIS AM FGIA

*Chairperson, Chair of Development Committee from 25 November 2020*

*Exofficio All Committees*

Bachelor of Arts

Executive Program (Graduate School of Business, University of Melbourne)

Fellow Governance Institute of Australia

AM - Member of the Order of Australia



## JANELLE RICHARDS

*Deputy Chairperson*

Bachelor of Arts (Social Sciences)

Graduate Diploma in Innovation and Service Management



## TRISTAN HERON

*Director*

*Chair of Finance Risk and Audit Committee, appointed 25 November 2020*

Bachelor of Commerce (Accounting and Finance, Deakin University)

Majoring Accounting, Finance, Bus Comm, Bus Info Systems

Chartered Accountant (Institute of Chartered Accountants Australia, 2010)



## RICHARD LIM

*Treasurer*

*Member of Finance, Risk and Audit Committee*

Bachelor of Business (Accounting)

CPA (Fellow CPA Australia)



## SHELLEY NAYLOR

*Director*

*Member of Finance, Risk & Audit Committee*

Bachelor of Laws

Bachelor of Economics

Admitted to practice in the Supreme Court of Victoria and the High Court of Australia



## SHIRLEY REEDER

*Director*

Post Grad Certificate - Applied Science - Innovation and Service Management

Certificate IV - Professional Coaching

International Coach Federation - Accredited ACC

Member - Australian Human Resources Institute CAHRI



## KYLIE WINGJAN

*Director*

*Appointed Chair of Development Committee 24th Nov 2021*



## TERESA THOMSON

*Member of Development Committee*



## ASSOCIATE PROFESSOR MAX KELLY

*Member of Development Committee*



## JONATHAN YAP

*Member of Finance, Risk & Audit Committee*

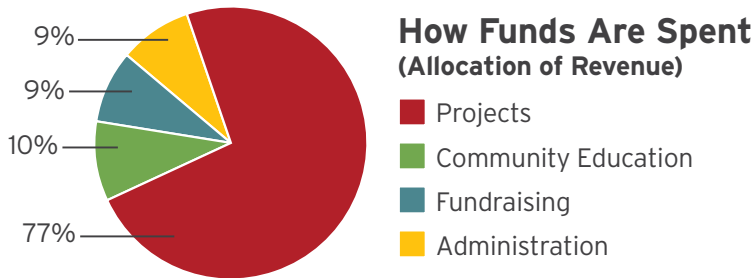


## KHULEKANI MATHE

*Member of Development Committee*

## MEMBERS OF OTHER COMMITTEES

# FINANCIAL REPORTS



NOTE: For comparison purposes and to be consistent with previous years, the non operating revenue from the termination of lease, the insurance claim refund, and a bequest as well as the relocation expenses and loss on sale of assets have not been taken into account when calculating these % of expenses.

The financial year ending 30 June 2022 has been another challenging year for INA resulting in a deficit of \$88,997 from normal operations, and an overall deficit of \$6,723 including adjustments related to the office relocation. This is a reasonable result given the disruption of the relocation and significant staff changes.

Raising funds for charitable purposes remains a key focus of INA. With a number of new strategies, and new staff in place, INA is in a good position for growth in the coming years. Total revenue excluding one off bequests, an insurance refund and lease termination income has increased to \$1,970,810. This is an increase of \$97,795 on the prior year. Reductions in Childlink, general donations and school programs were offset by increased government grant distribution income, designated projects income, communities, emergency relief and special projects giving.

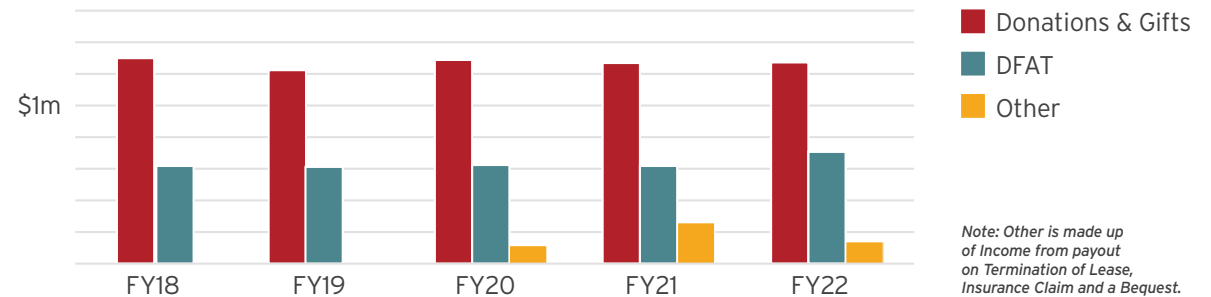
Once again INA was able to increase the allocation of funds to programs for the year to \$1,267,923, which is an increase of \$117,211 over the prior year. Additional expenses were incurred for the transition of IT systems, consultancy services, and other costs related to staff movements and office relocation. INA's operations and financial management continue to be regularly monitored by the Board, sub-committees and management.

You can request a copy of our full Financial Reports for the year end 30th June 2022 by contacting our office at 16 Corporate Boulevard Bayswater or by going to our website [www.ina.org.au](http://www.ina.org.au)

## BOARD DECLARATION

The Board of International Needs Australia declares that the accompanying concise financial report is presented fairly and in accordance with applicable accounting standards and is consistent with the company's 30th June 2022 financial report.

## Revenue Past Five Years



In respect of the 30th June 2022 financial report of International Needs Australia the board declares that:

1. The company is not a reporting entity because there are no users dependent on general purpose financial statements. Accordingly, special purpose financial statements have been prepared for the purposes of complying with the Australian Charities and Not-for-profits Commission Act 2012 requirements to prepare and distribute financial statements to the members of International Needs Australia.
2. The financial statements and associated notes comply with the Australian Charities and Not-for-profits Commission Act 2012, the Accounting Standards, Australian Charities and Not-for-profits Commission Regulations 2013 and other mandatory professional reporting requirements

3. The summary reports have been prepared in accordance with the requirements set out in the ACFID Code of Conduct. For further information on the Code of Conduct please refer to the ACFID Code of Conduct Implementation Guidance available at [www.acfid.asn.au](http://www.acfid.asn.au)

4. The financial statements and notes give a true and fair view of the company's financial position at 30 June 2022 and of its performance for the financial year ended on that date.

5. There are reasonable grounds to believe that the company will be able to pay its debts as and when they become due and payable.

This statement has been made in accordance with a resolution of the Board made on 26th October 2022.

Ian Curtis  
Board Chair

Tristan Heron  
Chair of FRAC

# FINANCE STATEMENTS

## INCOME STATEMENT FOR THE YEAR ENDED 30 JUNE 2022

	2022 (\$)	2021 (\$)
<b>REVENUE</b>		
Donations and Gifts	1,247,351	1,253,004
Bequests and Legacies	16,773	0
Grants		
Dept. Foreign Affairs and Trade	716,828	609,874
Investment Income	3,630	4,937
Other Income	104,270	269,718
Revenue for Int. Political or Religious Adherence Promotion	3,000	5,200
<b>TOTAL REVENUE</b>	<b>2,091,853</b>	<b>2,142,733</b>
<b>EXPENDITURE</b>		
International Programs		
Funds to International Programs	1,318,185	1,226,098
Program Support Costs	201,964	188,571
Community Education	202,090	149,767
Fundraising		
Public	168,150	142,449
Accountability & Administration	166,419	148,228
<b>TOTAL INT. AID AND DEVELOPMENT PROGRAMS EXPENDITURE</b>	<b>2,056,807</b>	<b>1,855,113</b>
Loss on Sale of Asset on Relocation	1,364	
Relocation Expenses	38,605	
Int. Political or Religious Adherence Promotion Expenditure	1,800	4,400
<b>TOTAL EXPENDITURE</b>	<b>2,098,576</b>	<b>1,859,513</b>
<b>TOTAL COMPREHENSIVE INCOME</b>	<b>(6,723)</b>	<b>283,220</b>

## STATEMENT OF FINANCIAL POSITION AS AT 30 JUNE 2022

	2022 (\$)	2021 (\$)
<b>CURRENT ASSETS</b>		
Cash and cash equivalents	906,714	1,038,756
Trade and other receivables	5,974	7,188
Held-to-maturity investments	150,000	150,000
Other	9,320	10,091
<b>TOTAL CURRENT ASSETS</b>	<b>1,072,007</b>	<b>1,206,035</b>
<b>NON-CURRENT ASSETS</b>		
Property, plant and equipment	56,238	5,232
Deposits Refundable	1,925	-
Right of Use Asset	116,970	49,221
<b>TOTAL NON-CURRENT ASSETS</b>	<b>175,113</b>	<b>54,453</b>
<b>TOTAL ASSETS</b>	<b>1,247,140</b>	<b>1,260,488</b>
<b>LIABILITIES</b>		
Current Liabilities		
Trade and other payables	33,022	18,341
Provisions	34,693	38,001
Lease Liability 1 yr	16,363	24,968
Other	119,893	202,151
<b>TOTAL CURRENT LIABILITIES</b>	<b>203,971</b>	<b>283,461</b>
<b>NON-CURRENT LIABILITIES</b>		
Provisions	16,050	19,162
Lease Liabilities 1 yr plus	101,705	25,727
<b>TOTAL NON-CURRENT LIABILITIES</b>	<b>117,755</b>	<b>44,889</b>
<b>TOTAL LIABILITIES</b>	<b>321,726</b>	<b>328,351</b>
<b>NET ASSETS</b>	<b>925,414</b>	<b>932,137</b>
<b>EQUITY</b>		
Reserves	5,499	4,899
Retained Surpluses/Deficits	919,915	927,238
<b>TOTAL EQUITY</b>	<b>925,414</b>	<b>932,137</b>



## STATEMENT OF CHANGES IN EQUITY FOR THE YEAR ENDED 30 JUNE 2022

	Capital reserve (\$)	Retained profits (\$)	Total equity (\$)
<b>BALANCE AS AT 1 JULY 2020</b>	<b>4,299</b>	<b>644,618</b>	<b>648,917</b>
Excess/Deficit of Revenue over Expenses		283,220	283,220
Amount transferred (to) from Reserves	600	(600)	-
<b>BALANCE AS AT 1 JULY 2021</b>	<b>4,899</b>	<b>927,238</b>	<b>932,137</b>
Excess/Deficit of Revenue over Expenses		(6,723)	(6,723)
Amount transferred (to) from Reserves	600	(600)	-
<b>BALANCE AS AT 30 JUNE 2022</b>	<b>\$5,499</b>	<b>\$919,915</b>	<b>\$925,414</b>



Right: Made possible through your support, Mrs. Ponnuniyammal received business training and a small loan that she used to start her own small business and has since increased her household's income and is now able to send her daughters to school.



**INTERNATIONAL NEEDS AUSTRALIA**

**ABN 84 006 053 229**

**Report of the Independent Auditor on the  
Summary Financial Report**

**Opinion**

The 2022 annual report that contains a summary financial report, which comprise the statement of financial position as at 30 June 2022, the income statement and statement of changes in equity for the year then ended are derived from the audited financial report of International Needs Australia for the year ended 30 June 2022.

In our opinion, the accompanying summary financial report is consistent, in all material respects, with the audited financial report, which is compliant with the ACFID Code of Conduct.

**Summary Financial Statements**

The summary financial report does not contain all the disclosures required by Australian Accounting Standards, the Australian Charities and Not-for-profits Commission Act 2012 and the ACFID Code of Conduct. Reading the summary financial statements and the auditor's report thereon, therefore, is not a substitute for reading the audited financial report and the auditor's report thereon. The summary financial statements and the audited financial report do not reflect the effects of events that occurred subsequent to the date of our report on the audited financial report.

20 Albert St, PO Box 256, Blackburn VIC 3130  
T +61 3 9894 2500 F +61 3 9894 1622  
contact@sawarddawson.com.au  
sawarddawson.com.au



Liability limited by a scheme approved under Professional Standards Legislation



**The Audited Financial Report and Our Report Thereon**

We expressed an unmodified audit opinion on the audited financial report in our report dated 17 November 2022.

**Board's Responsibility for the Summary Financial Statements**

The board is responsible for the preparation and presentation of the summary financial report.

**Auditor's Responsibility**

Our responsibility is to express an opinion on whether the summary financial statements are consistent, in all material respects, with the audited financial report based on our procedures, which were conducted in accordance with Auditing Standard ASA 810 *Engagements to Report on Summary Financial Statements*.

*Saward Dawson*

**Saward Dawson**

*Jeffrey Tulk*

Jeffrey Tulk  
Partner

Blackburn VIC  
Date: 17 November 2022

20 Albert St, PO Box 256, Blackburn VIC 3130  
T +61 3 9894 2500 F +61 3 9894 1622  
contact@sawarddawson.com.au  
sawarddawson.com.au



Liability limited by a scheme approved under Professional Standards Legislation

# LET'S CHAT

## ACCREDITATION

INA is fully accredited with the Australian Government Department of Foreign Affairs and Trade (DFAT).

INA is a member of the Australian Council for International Development (ACFID). As a member and signatory to ACFID's Code of Conduct, INA is required to meet high standards of corporate governance, public accountability and financial management for nongovernment development organisations.

Adherence to the Code is monitored by an independent Code of Conduct Committee elected from the NGO community. Our voluntary adherence to the Code of Conduct demonstrates our commitment to ethical practice and public accountability. For more information on the ACFID Code of Conduct, visit the ACFID website on [www.acfid.asn.au](http://www.acfid.asn.au) or email [code@acfid.asn.au](mailto:code@acfid.asn.au)

If you believe INA has breached the ACFID Code of Conduct, you may lodge a complaint here: [www.acfid.asn.au/content/complaints](http://www.acfid.asn.au/content/complaints)

INA is also a member of Australian Charities and Not-for-profits Commission (ACNC), which, is the national regulator of charities, and in part helps to support Australian charities and maintain public trust in not-for-profits.

## ACCREDITATION AND CERTIFICATION



ACFID  
MEMBER



## THIS ANNUAL REPORT IS ENVIRONMENTALLY FRIENDLY



We welcome feedback and suggestions.  
Please email yours to [info@ina.org.au](mailto:info@ina.org.au)

For INA's Complaints Policy or to make a complaint,  
please visit [www.ina.org.au/complaints](http://www.ina.org.au/complaints)

INA would like to acknowledge the incredible people -  
volunteers, interns, contractors, suppliers and partners -  
who have given of their time, energy and talents throughout  
2021/22.

INA appreciates all of your efforts and values the  
relationships we hold that help us do what we do. Thank you!

## CONTACT DETAILS

### Mail

PO Box 121  
Mitcham VIC 3132  
AUSTRALIA

### Physical Address

16 Corporate Boulevard  
Bayswater VIC 3153  
AUSTRALIA

### Phone

1300 731 550 (cost of a local call)  
or (+61) 3 9877 7177

### Web

[www.ina.org.au](http://www.ina.org.au)

### Email

[info@ina.org.au](mailto:info@ina.org.au)

### ABN

84 006 053 229

### ACN

006 053 229



[www.ina.org.au](http://www.ina.org.au)

Image Above: Children in the Shurmo District in Ethiopia now have access to clean water thanks to the construction of the new water taps constructed throughout the community